



# 2025 CSR Report

Going  
**THE EXTRA MILE**



RM Group AG  
March 2026

# Content

---

1 About us

2 Climate & Environment

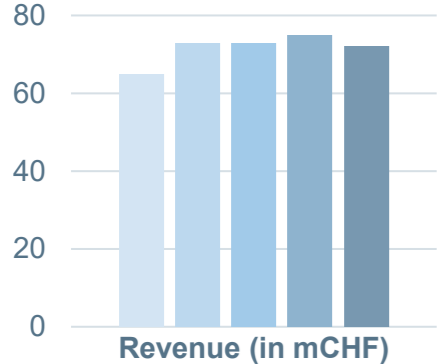
3 Equality

4 Next steps

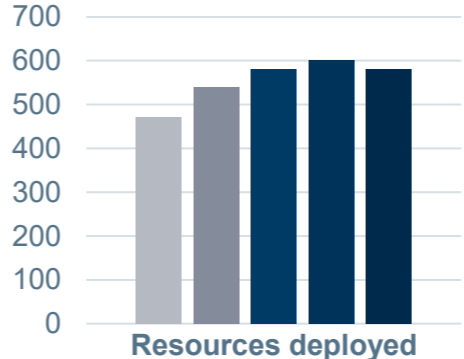


# About RM

We want our customers to get ahead. This applies to candidates as well as to clients. That's why we have been working as a recruitment agency for the largest and most renowned companies in Switzerland since 1998. However, "work" is not quite the right word. We live recruitment. In all its facets.



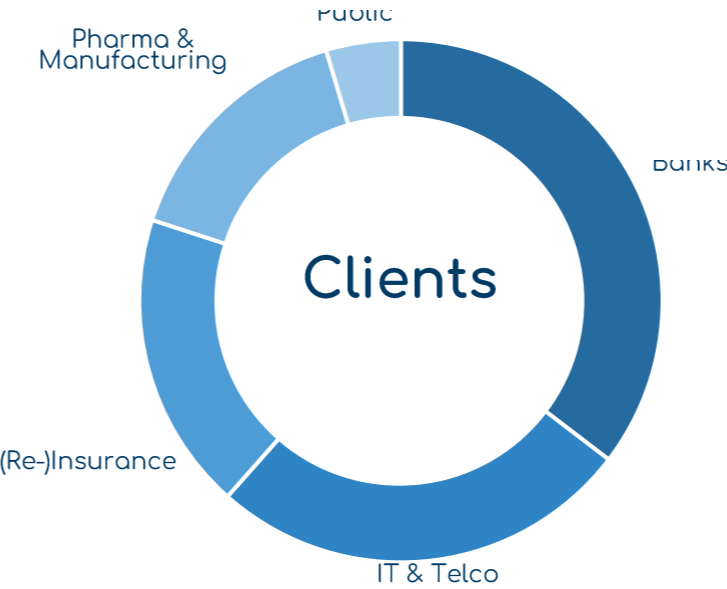
■ 2021 ■ 2022 ■ 2023 ■ 2024 ■ 2025



Independent staffing agency with 25 years of industry experience and in-depth knowledge of the Swiss market

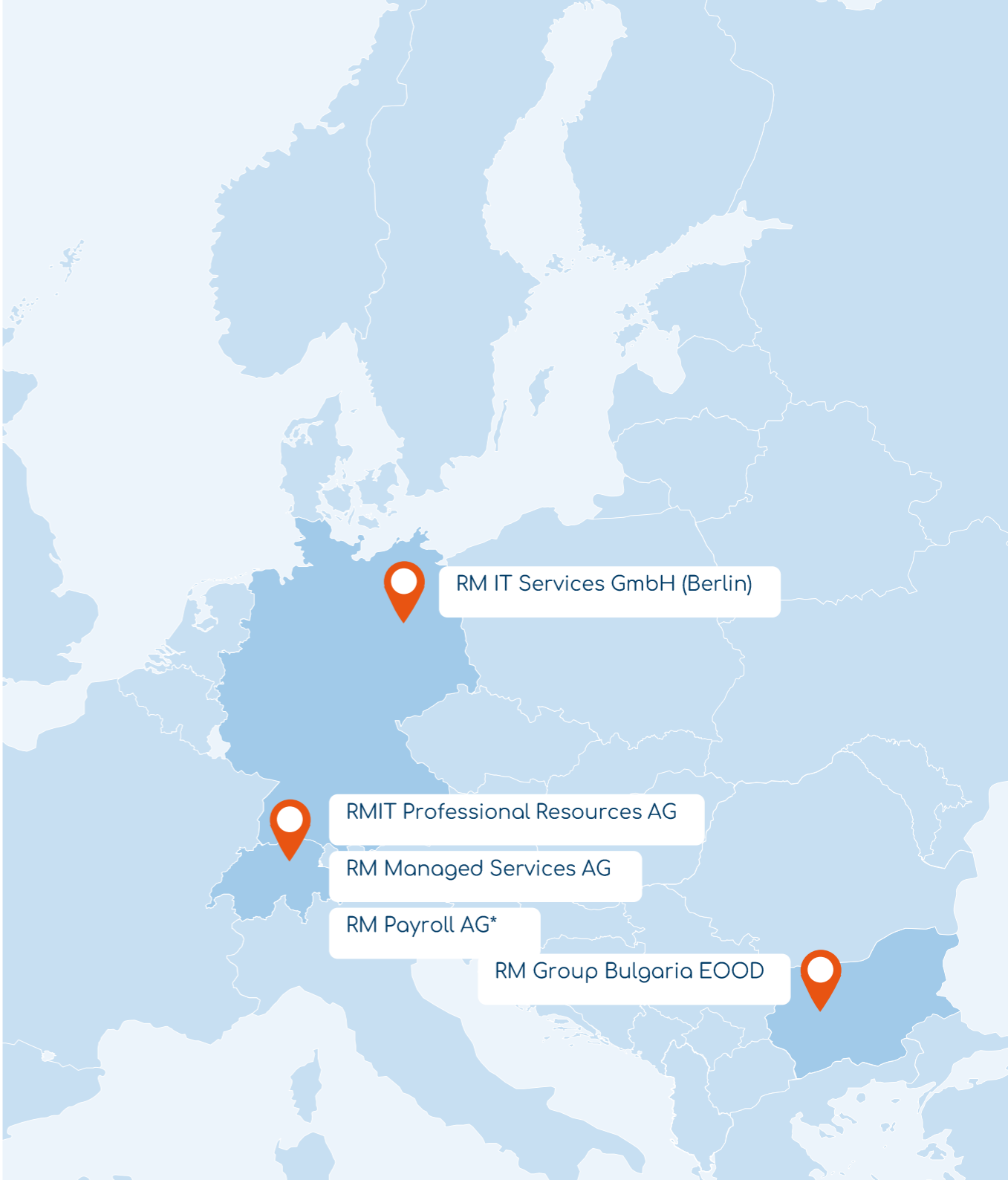
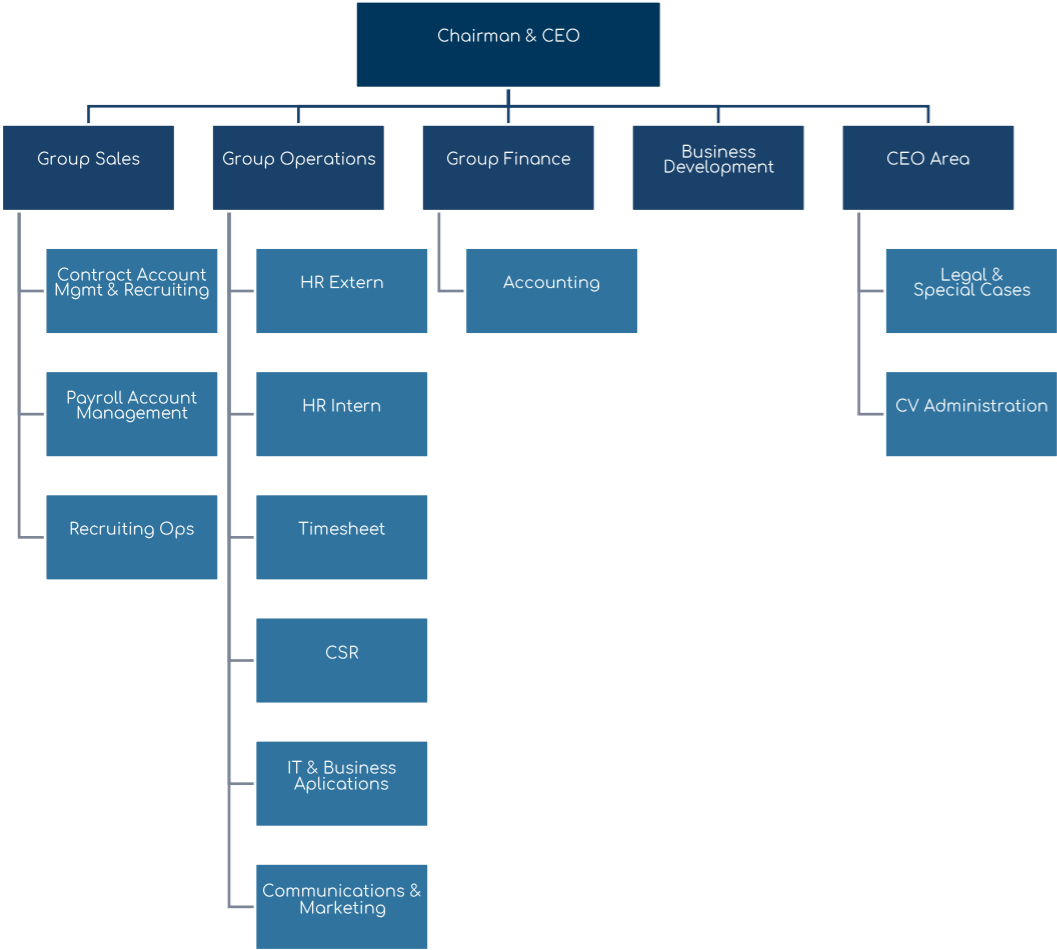
Is self-financed and a reliable constant in the market (with more than CHF 50 million sales every year since 2011)

Certified according to ISO 9001, ISO 14001, and EcoVadis (Gold since 2022), swissstaffing member since 2022 and CDP discloser since 2024



# Our Organisation

Our boutique size allows us to be flexible and responsive to our clients' needs, while our knowledge of the market and longstanding relationships with clients demonstrate our stability and commitment to their success.



\* Operations will be merged into RMIT in due time

# Our Service Offering

---

We have been working as a recruitment agency for the largest and most renowned companies in Switzerland since 1998. However, the word “work” is not quite the right word. We live recruitment. In all its facets.



## Contracting

---

Especially for IT and project mgmt, we find qualified resources for important project assignments within a few days. Our focus is on clients from banking, technology, insurance, pharma, industrial as well as the public sector.



## Payroll

---

For our clients, we take care of the entire administration for external employees in Switzerland in a legally compliant and efficient manner. In doing so, we clarify any questions regarding social insurance, tax law, and labour law.



## Managed Service

---

For selected clients, we coordinate 3rd parties in a legally compliant and efficient manner. RM Group has explored compliant solutions under Swiss law and secured corresponding rulings from the relevant authorities (SECO, AWA)



# Our CSR commitment

“Going the Extra Mile” applies to all areas for us. So also in quality assurance, environmental protection, and data protection. We are not satisfied with lip service. And neither should you. We are audited year after year by external, independent service providers and meet all requirements in terms of compliance, environmental protection, and quality assurance again and again. This is the only reason why we are regularly certified to ISO 9001, 14001 and swissstaffing standards.

Our CSR engagement is confirmed as signatory of UN global compact - rated “Gold” by EcoVadis since 2021.



Within the UN global compact framework, we focus on the following three areas where we feel we can make the most relevant impact



# Content

---

1 About us

2 Climate & Environment

3 Equality

4 Next steps



# Climate & Environment

- Overall environment strategy documented since 2012 and certified by ISO 14001 standard
- CO2 Emission from electricity (only Scope 1&2 emissions) and air travel (major scope 3 influenceable area) are actively being reduced. In 2025, we participated in CDP and publicly published our submission, being rated “B” for climate
- We began offsetting the CO2 emissions of our business flights in 2022 and expanded this commitment to all travel-related emissions in 2024.
- Ecovadis participant since 2016, gold rated since 2022 and again most recently in Nov 2024. The overall score was 77/100, with a score of 90 for the environmental aspects.
- Responsible consumption has been practiced at RM since its creation. Doing what is possible at our own locations (ca. 46 staff at 3 locations) with waste separation, avoidance of paper usage (less than 300 pages per internal staff) and environmentally compatible cleaning products etc. From the very beginning, we have embraced a car-free approach, demonstrating our commitment to sustainable mobility by fully supporting and subsidizing public transport for our staff.
- Since 2023, RM is also participating in CEO4Climate and swisscleantech, advocating measurable action in Switzerland and beyond. RM furthermore publishes regular climate-related posts in social media to enhance overall awareness and urgency of need to act on climate change.

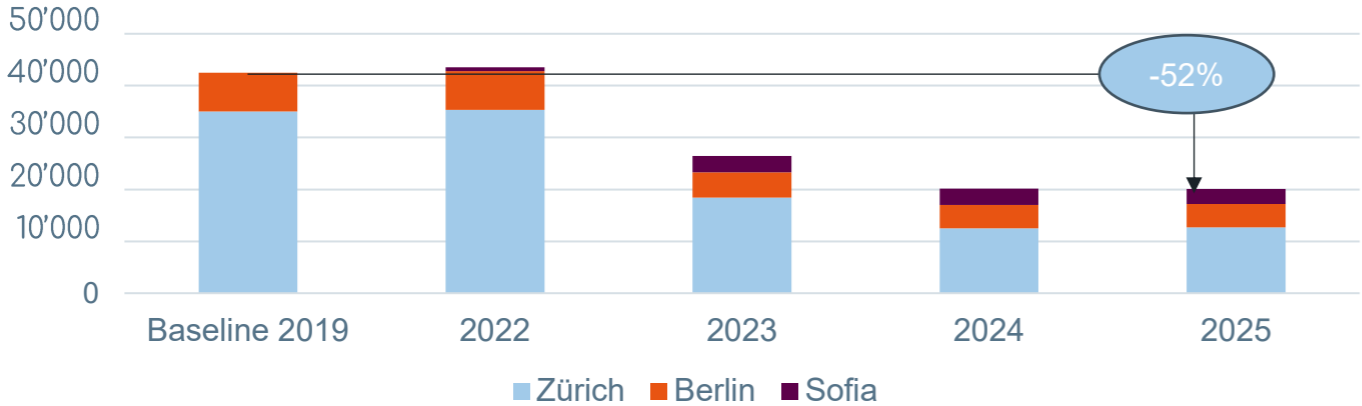


# Scope 1 & 2 Emissions - Electricity

RM Group does not own any buildings nor any vehicles. Therefore, we do not have any Scope 1 emissions – and that since before 2018.

Electricity use has been reduced over time through reduction in office space and installing more efficient equipment (including replacing any legacy lights with LEDs by end of Q1 2023). In the last 5 years, we halved our electricity usage, of the remaining usage, half is now “self-produced” with 126m2 solar panels from EWZ for the next 20 years.

Electricity Usage in kwh



### 2025 Highlight

“Purchased” 126m2 solar panel through solarzüri from EWZ, so that most of our electricity usage in Switzerland is now locally “self-produced”.

### Targets

- By 2025 – 50% reduction in use vs. Baseline (achieved)
- By end of 2025 – secured renewable energy for our Bulgarian office
- By 2030 – net zero targets under STPI criteria

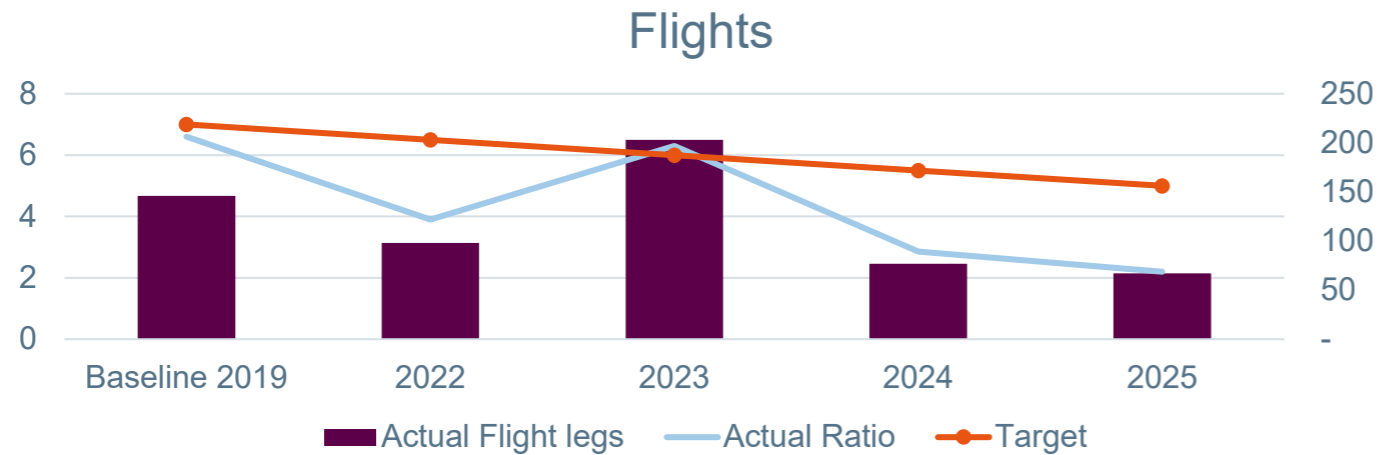
- Zürich: contracted directly from EWZ. 100% renewable since before 2018. Current product ewz.solarzüri and ewz.natur. Indirect electricity and heating (Fernwärme) purchased through landlord.
- Berlin: contracted from Vattenfall. 100% renewable since before 2018. Current Product “Profi Natur 12”. Indirect electricity and heating purchased through landlord
- Sofia: direct electricity use still contracted through landlord. Evaluated and implemented option to ensure 100% renewables with certificate



# Scope 3 Emissions – Business travels

Currently RM Group only measures its air travel CO2 emissions which have been reported and compensated since 2022.

In 2025, RM Group issued a STPI net-zero target plan for 2050.



## 2025 Highlight

- In 2025, significantly more travel between Zürich and Berlin by train than by air (13 train legs)
- 2023 was exception with international offsite to celebrate 25-year anniversary

- Target is defined as flights per year and per all internal staff
- 2025 as per year end, we had in total 45 employees
- We had total 49'476 distance (km) in flights by the end of 2025

## Targets

- By 2035 – reduction of Scope 3 emission by 50% vs estimated pre-corona baseline
- By 2035 – net zero under STPI criteria



# Content

---

- 1 About us
- 2 Climate & Environment
- 3 Equality
- 4 Next steps



# Equality

---

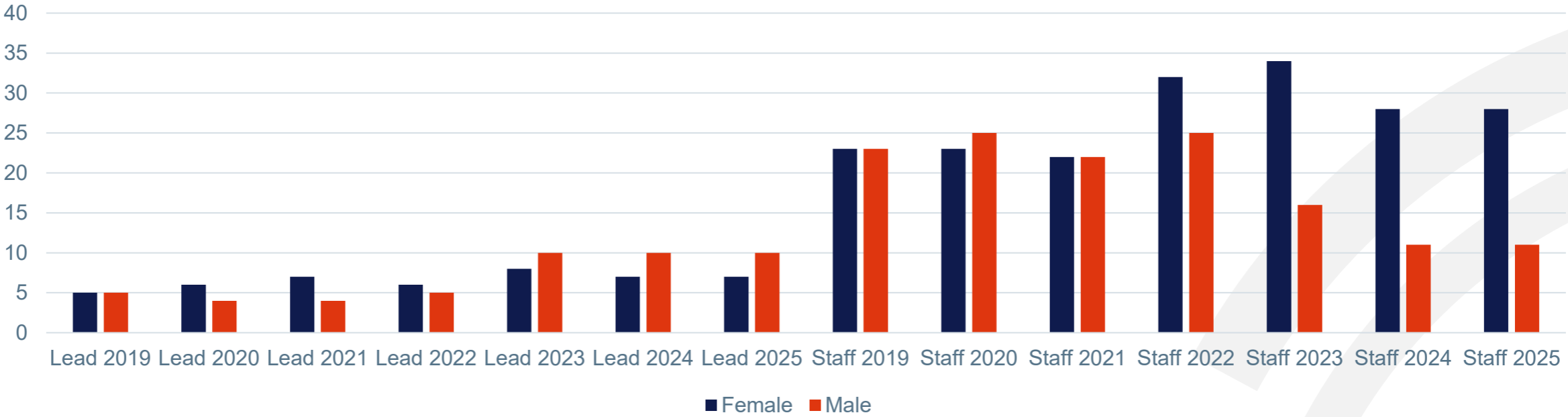
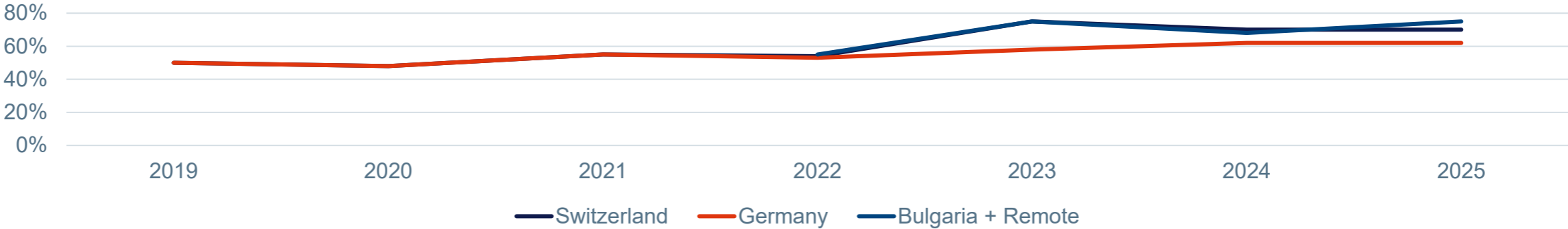
- RM Group is fully committed to providing a safe and equal opportunity to all staff.
- As per end of 2025, 60% of all employees and 40% of our leadership is female.
- Salary equality is verified annual by Logib for internal staff and was formally audited for all (internal and external) staff of the main operating company RMIT Professional Resources AG by Treureva (now rebranded Avanta), our corporate auditor.
- In 2021, we joined the Partnership for Global LGBTI Equality, which supports the UN Standards of Conduct for Businesses Opposing Discrimination. We also proudly endorse the Diversity charta /& charta der Vielfalt
- RM Group has been providing apprentice schemes in Switzerland since 2017 and currently has 2 apprentices in Switzerland, providing learning opportunities to career starters.
- As member of swissstaffing, we are committed to providing equal opportunities to all external staff



# Gender Diversity

Overall, more than 60% of our staff are female, as are 40% of our leadership (team leads and members of management). Overall, we strive for a balanced representation at all levels and take each recruiting and promotion decision on merit of the candidate. Pyramid inequality is partially due to all two apprentices being female and our new Bulgarian staff being predominately female staff.

Percentage female staff



# Content

---

- 1 About us
- 2 Climate & Environment
- 3 Equality & Education
- 4 Next steps



# Next steps

---

- RM Group strives to continuously improve its contribution to society at large
- Furthermore, we will develop more encompassing rules for our suppliers to ensure compliance along the value chain.
- We will broaden our CSR footprint to focus on education for internal staff, external staff / resources deployed to clients and society in general.
- We have developed our new Net Zero Target plan and enhanced our GHG reporting processes to improve transparency and track progress toward our sustainability goals.
- We implement regular sustainability posting on social media channels.





**Yohan Bräunling**  
CEO

RM Group  
Förrihubstrasse 10  
8005 Zurich

